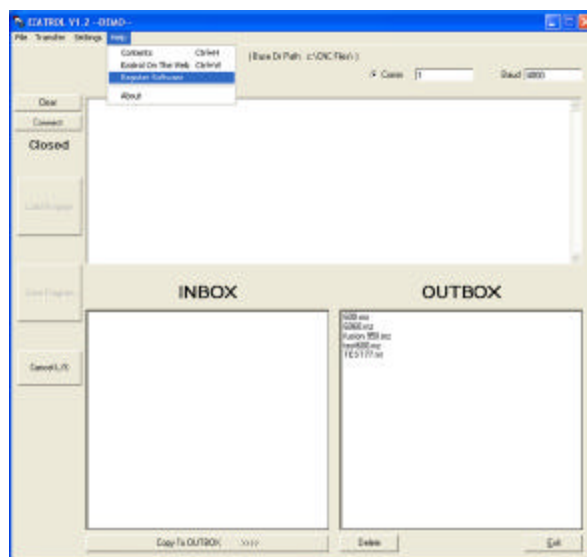
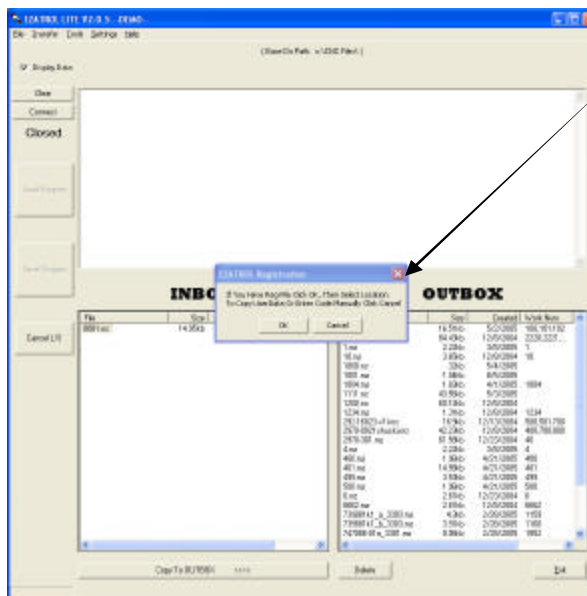


# EZATROL LITE & PRO INSTALLATION

- 1, EZATROL LITE & PRO installation instructions are the same. Check Online at [www.ezatrol.com](http://www.ezatrol.com) for latest version. If newer version is available then download the newest version of the demo.
- 2, If downloaded then expand the zip file into a empty dir. CD will just start.  
LITE Ver "There will be three files." PRO Ver "There will be four files."
- 3, Run the setup.exe
- 4, After install is complete open EZATROL and select Help—Register Software



- 5, A dialog will appear and ask you if you have the registration file.



DIALOG



# EZATROL LITE & PRO INSTALLATION

- 12, The EZATROL DNC Registration Form will appear. All information should be filled in. If Name: field is blank, fill with anything, 8 characters or more.
- 13, Click the REGISTER Button.

EZATROL DNC Software Registration

**EZATROL DNC  
REGISTRATION**

User Data:  
AEC73F523B6A8934A9E40C1C90C670539!

Name:

Registration Code:  
===== REGISTRATION KEY =====  
6i25uDPrcK/s+tTfQzqpeccEdOhj+L  
pAksbyc98QoM3go6lGbUof4N8KaCbJ  
NXJodL+QIaCZhISnbntQBrN1f1m3FQ

Register Exit

- 14, You will get some Message Boxes, EZATROL will shut down, and restart with the Full Registered Version Loaded.

\* Note: If you have any problems with this process email [sales@ezatrol.com](mailto:sales@ezatrol.com)